



Spacious garden visible through double-height window wall.

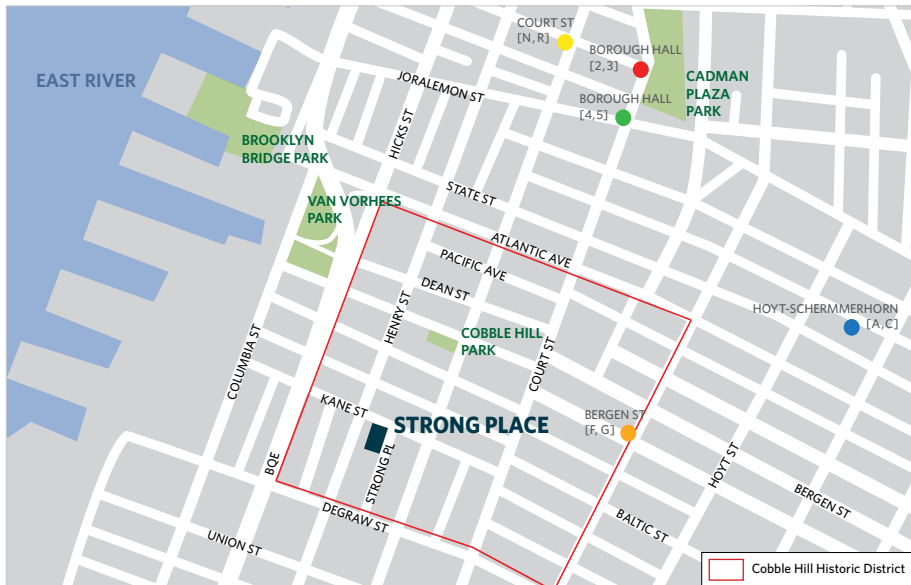


Corner of Strong Place and Kane Street in the heart of the Cobble Hill Historic District.

# 2 STRONG PLACE, BROOKLYN

**COBBLE HILL  
HISTORIC DISTRICT**

**21<sup>ST</sup> CENTURY INTERIOR WRAPPED  
IN A 19<sup>TH</sup> CENTURY EXTERIOR**



**At 2 Strong Place, you'll be just minutes to a wealth of area amenities.**

**IN JUST MINUTES, YOU CAN WALK TO:**

- Brooklyn Bridge Park
- Brooklyn Heights Promenade
- 2, 3, 4, 5, A, C, N and R subway lines
- The Fulton Street Ferry Landing
- Cadman Plaza Park
- Great shopping and dining



**Donald Brennan**  
Broker  
917 568 6525  
dbrennan@brennanrealestate.com



**Betsy Hoffman**  
Sales  
917 622 3879  
bhoffman@brennanrealestate.com

Brennan Realty Services is brownstone Brooklyn's boutique real estate firm specializing in homes located in and around Brooklyn's landmark districts.

BRENNAN REALTY SERVICES, LLC IS A LICENSED REAL ESTATE BROKERAGE IN NEW YORK.

[www.brennanrealtyservices.com](http://www.brennanrealtyservices.com)

All information furnished regarding property for sale, rental or financing is from sources deemed reliable, but no warranty or representation is made as to the accuracy thereof and same is submitted subject to errors, omissions, change of price, rental or other conditions, prior to sale, lease or financing or withdrawal without notice. All dimensions are approximate.



*Make this exquisite custom Townhouse your very own.*

**Brennan realty services LLC**

BROWNSTONE BROOKLYN'S RESIDENT EXPERTS

**Brennan realty services LLC**

BROWNSTONE BROOKLYN'S RESIDENT EXPERTS

# 2 STRONG PLACE, BROOKLYN

## COBBLE HILL HISTORIC DISTRICT

Be the first to live in this newly constructed, custom townhome in Cobble Hill. Elegant proportions, warm and inviting are the best ways to describe this exquisite new home. Located on one of the best streets in Cobble Hill, this beautiful townhome is a new take on a classic Brooklyn Brownstone with exceptional amenities and modern conveniences. The floor plans place a premium on stylish functionality for both growing families and couples who like to entertain.



### ABOUT

The Strong Place townhomes are located in the Cobble Hill Historic District and are walking distance from the world class Brooklyn Bridge Park and steps away from fine dining and boutique retail shops. The home will be consistent with LEED gold standards, making the townhome extremely energy efficient. 2 Strong Place is currently designed to include: hardwood floors with radiant heat; Marvin double-hung clad windows; central air-conditioning; high-end, energy-efficient kitchen appliances; custom woodwork and cabinetry and a landscaped garden. A fall 2013 delivery is anticipated.

### LAYOUT

**GARDEN FLOOR:** The garden level contains a chef's kitchen, which will include customizable cabinets and countertops, high-end energy efficient appliances and a two-story window wall, bringing natural light and nature into your living space. The well designed and functional garden level also includes a traditional mud room and powder room adjacent to the under-stoop entrance.

**PARLOR FLOOR:** This formal living space is evocative of a classic brownstone townhome with its well proportioned sitting room located off the entry foyer and its spacious and well lit living room with a wood burning fireplace, wet bar and oriel window. What makes this room extra special is the two story window-wall overlooking the private landscaped garden.

**SECOND FLOOR:** The large master bedroom suite, includes a master bath composed of a custom vanity with double sinks, mosaic tile flooring, tile wainscoting, separate shower and claw-foot bathtub nestled in the oriel window niche. The suite also includes a spacious walk-through closet and an outdoor terrace overlooking your private landscaped garden. Also included in the master suite is a wide and spacious sitting room that can be configured to your own needs.

**THIRD FLOOR:** The third floor has two large bedrooms with a shared bathroom and convenient laundry/utility room.

**FOURTH FLOOR:** A magnificent skylight allows for an abundance of natural light to filter down into the house through openings in the stair landing and upper floors. At this level there is another large multi-function room with outdoor terrace. A full bath and street side roof deck complete the amenities at this level.

**CARRIAGE HOUSE:** 800 sq ft, 2-story detached carriage facing Kane Street has a garage on the first floor and a studio with bathroom on the second floor.

*If you are looking for a rare opportunity to be involved from start to finish on the customization of your very own Brooklyn brownstone, then give us a call today—you could be a part of Cobble Hill's history!*

### 2 Strong Place, Brooklyn, NY 11231

**BUILDING SIZE**  
4,927 SF TOTAL  
4,127 SF TH  
800 SF CH

**BUILDING DIMENSIONS**  
17' X 54' TH  
16' X 25' CH

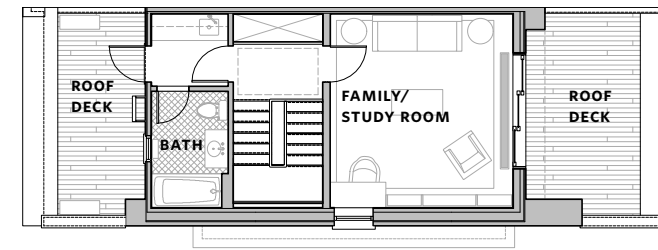
**BEDROOMS**  
6

**LOT DIMENSIONS**  
17' X 110'

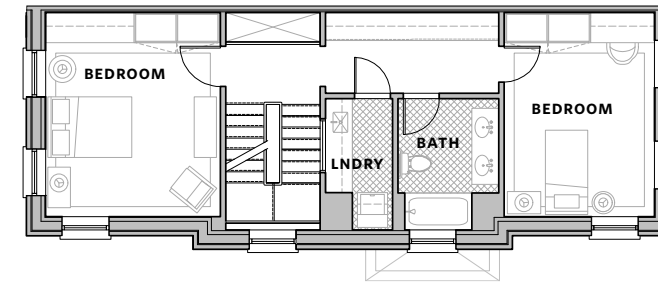
**BATHROOMS**  
4.5

**TYPE**  
One-Family Townhouse  
Plus Carriage House

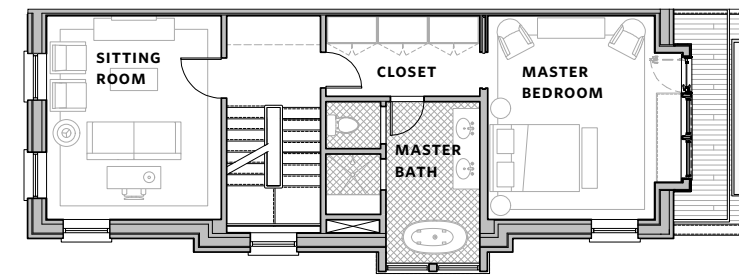
4TH FLOOR



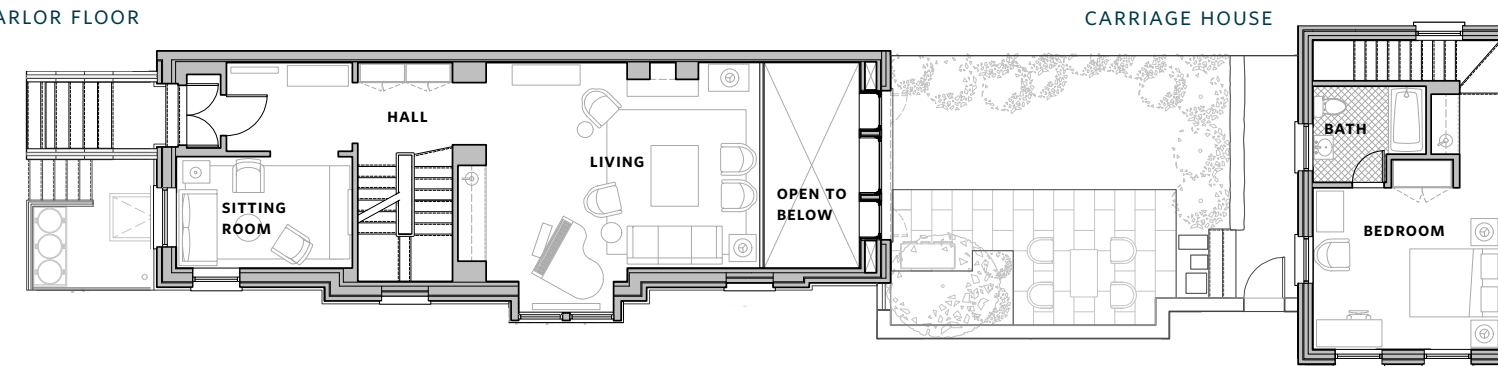
3RD FLOOR



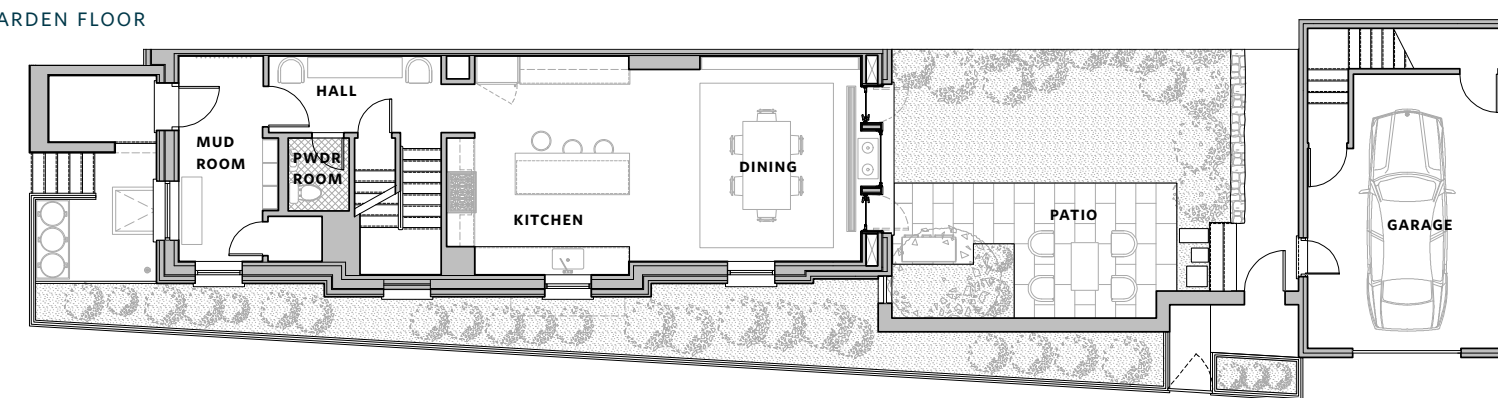
2ND FLOOR



PARLOR FLOOR



GARDEN FLOOR



CELLAR FLOOR

