



Spacious garden visible through double-height window wall.

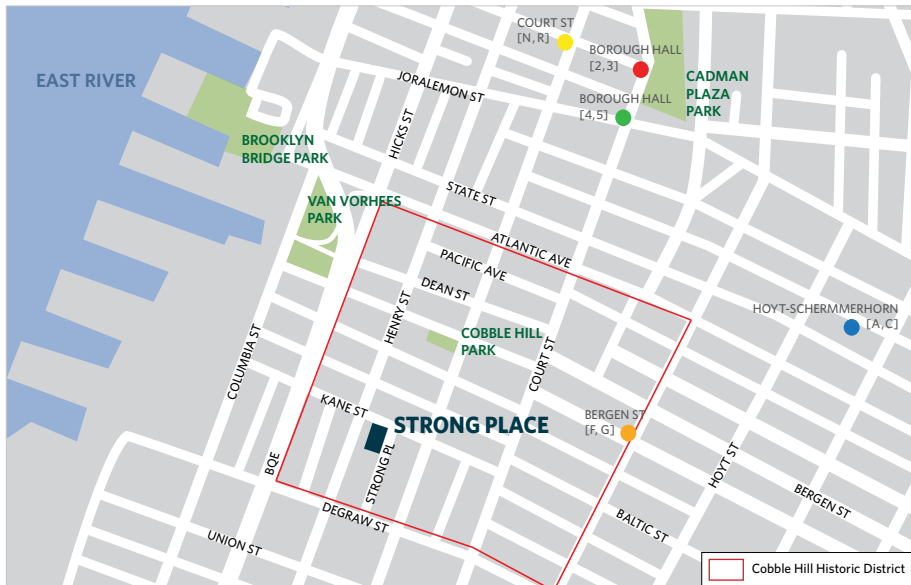


Corner of Strong Place and Kane Street in the heart of the Cobble Hill Historic District.

# 4A STRONG PLACE, BROOKLYN

**COBBLE HILL  
HISTORIC DISTRICT**

**21<sup>ST</sup> CENTURY INTERIOR WRAPPED  
IN A 19<sup>TH</sup> CENTURY EXTERIOR**



**At 4A Strong Place, you'll be just minutes to a wealth of area amenities.**

**IN JUST MINUTES, YOU CAN WALK TO:**

- Brooklyn Bridge Park
- Brooklyn Heights Promenade
- 2, 3, 4, 5, A, C, N and R subway lines
- The Fulton Street Ferry Landing
- Cadman Plaza Park
- Great shopping and dining



**Donald Brennan**  
Broker  
917 568 6525  
dbrennan@brennanrealestate.com



**Betsy Hoffman**  
Sales  
917 622 3879  
bhoffman@brennanrealestate.com

Brennan Realty Services is brownstone Brooklyn's boutique real estate firm specializing in homes located in and around Brooklyn's landmark districts.

BRENNAN REALTY SERVICES, LLC IS A LICENSED REAL ESTATE BROKERAGE IN NEW YORK.

[www.brennanrealtyservices.com](http://www.brennanrealtyservices.com)

All information furnished regarding property for sale, rental or financing is from sources deemed reliable, but no warranty or representation is made as to the accuracy thereof and same is submitted subject to errors, omissions, change of price, rental or other conditions, prior to sale, lease or financing or withdrawal without notice. All dimensions are approximate.



*Make this exquisite custom Townhouse your very own.*

# 4A STRONG PLACE, BROOKLYN

## COBBLE HILL HISTORIC DISTRICT

Be the first to live in this newly constructed, custom townhome in Cobble Hill. Elegant proportions, warm and inviting are the best ways to describe this exquisite new home. Located on one of the best streets in Cobble Hill, this beautiful townhome is a new take on a classic Brooklyn Brownstone with exceptional amenities and modern conveniences. The floor plans place a premium on stylish functionality for both growing families and couples who like to entertain.



### ABOUT

The Strong Place townhomes are located in the Cobble Hill Historic District and are walking distance from the world class Brooklyn Bridge Park and steps away from fine dining and boutique retail shops. Each home will be consistent with LEED gold standards, making the townhome extremely energy efficient. 4A Strong Place is currently designed to include: hardwood floors with radiant heat; Marvin double-hung clad windows; central air-conditioning; high-end, energy-efficient kitchen appliances; custom woodwork and cabinetry and a landscaped garden. A fall 2013 delivery is anticipated.

### LAYOUT

**GARDEN FLOOR:** This one-bedroom apartment with private entrance is spacious and bright. The unit has a full bath, open custom kitchen, and dining and living room that lead to a private outdoor patio.

**PARLOR FLOOR:** Located off the entry foyer, this formal living space is evocative of a classic brownstone townhome with its well proportioned sitting room. The chef's kitchen will include customizable cabinets and countertops, high-end, energy efficient appliances, a wood burning fireplace and a garden window-wall; bringing natural light and nature into your living space and overlooking the private landscaped garden which can be accessed from the deck.

**SECOND FLOOR:** The large master bedroom suite includes a master bath composed of a custom vanity with double sinks, mosaic tile flooring, tile wainscoting, separate shower and tub. The suite also includes a spacious walk-through closet and an outdoor terrace overlooking your private landscaped garden. Also at this level is a wide and spacious sitting room that can be configured to your own needs.

**THIRD FLOOR:** The third floor has two large bedrooms, a very functional bathroom with a double sink custom vanity and a convenient laundry/utility room.

**FOURTH FLOOR:** A magnificent skylight allows for an abundance of natural light to filter down into the house through openings in the stair landing and upper floors. At this level there is another large multi-function room with outdoor terrace. A full bath and street side terrace complete the amenities at this level.

*If you are looking for a rare opportunity to be involved from start to finish on the customization of your very own Brooklyn brownstone then give us a call today you could be a part of Cobble Hill's history!*

## 4A Strong Place, Brooklyn, NY 11231

**BUILDING SIZE**  
3,891 SF

**BEDROOMS**  
5

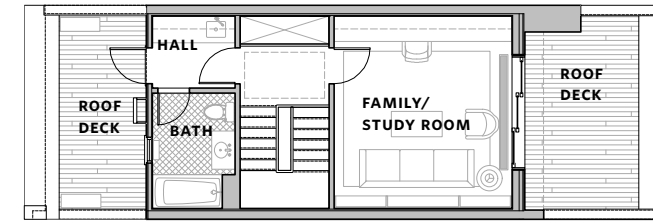
**BATHROOMS**  
3-5

**BUILDING DIMENSIONS**  
17' x 55'

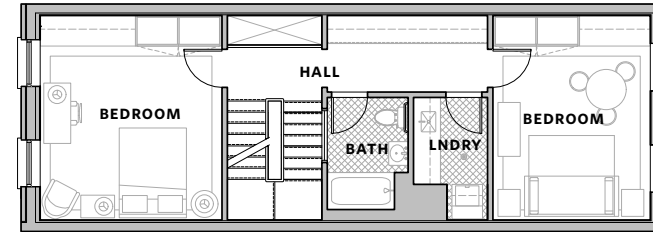
**LOT DIMENSIONS**  
17' x 110'

**TYPE**  
Two-Family Townhouse

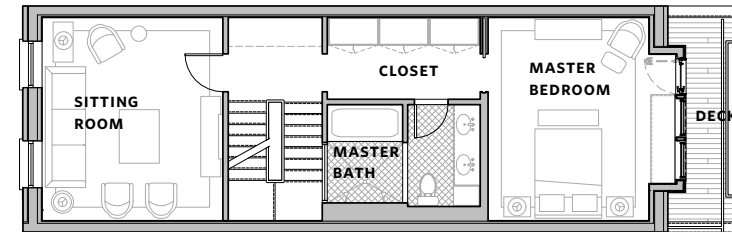
### 4TH FLOOR



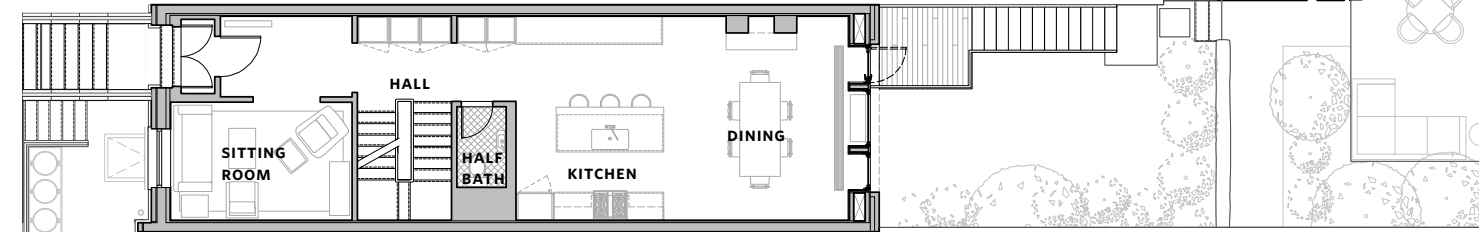
### 3RD FLOOR



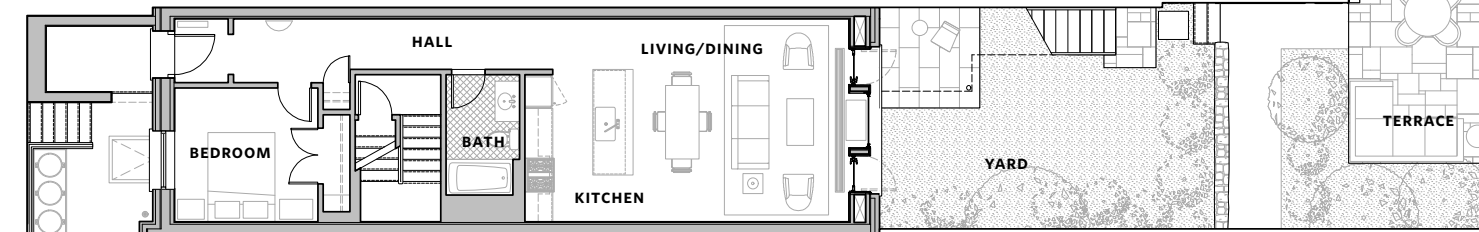
### 2ND FLOOR



### PARLOR FLOOR



### GARDEN FLOOR



### CELLAR FLOOR

